

Lockngo

User Manual

Rev. 4-02.05

Table of contents

1.	<i>System Requirements</i>	3
2.	<i>The Lockngo demo version</i>	4
2.1.	<i>Running the demo version</i>	4
2.2.	<i>Demo version limitations</i>	4
3.	<i>Using Lockngo</i>	5
3.1.	<i>Locking your drive</i>	5
3.2.	<i>Visual feedback during lock</i>	6
3.3.	<i>Lock reminder</i>	6
3.4.	<i>Unlocking your removable drive</i>	6
3.5.	<i>Visual feedback during unlock</i>	7
4.	<i>Important Issues</i>	7
5.	<i>Frequently Asked Questions (FAQ)</i>	8

1. System Requirements

- *Pentium III and above*
- *1MB of free space in the removable drive*
- *Supports: Windows 98® Second Edition, Windows Me®, Windows 2000®, Windows XP®, Windows 2003® (In order for you to run Lockngo on Windows 2000, XP and Windows 2003 you must have administrative privileges)*
- *Supports: FAT and FAT32 file system*
- *Supports: Flash memory drives and external hard drives*



2. The Lockngo demo version

You may download the demo version of Lockngo by visiting the Keynesis website www.keynesis.com

2.1. Running the demo version

The Lockngo demo is a stand-alone executable program that does not require any type of installation in order to work properly. After you download the demo version, you can copy the Lockngo demo executable file to your removable drive.

Run Lockngo by double clicking on the "lockngo.exe" file.

2.2. Demo version limitations

The Lockngo demo version does not allow a password to be used for the lock and unlock process.



Figure 1: Lockngo demo version user interface

3. Using Lockngo

3.1. Locking your drive

Locking your removable drive requires you to choose a password and confirm the password you chose (in registered version only). The password must contain at least one character. Obviously, the longer the password is, the harder it would be to guess it.

Recommendation: We recommend using a password that contains at least 8 characters including small letters and caps, numbers and special symbols such as: ~!@#\$\$%^&*~

After choosing a password, click on the 'OK' button to lock the drive

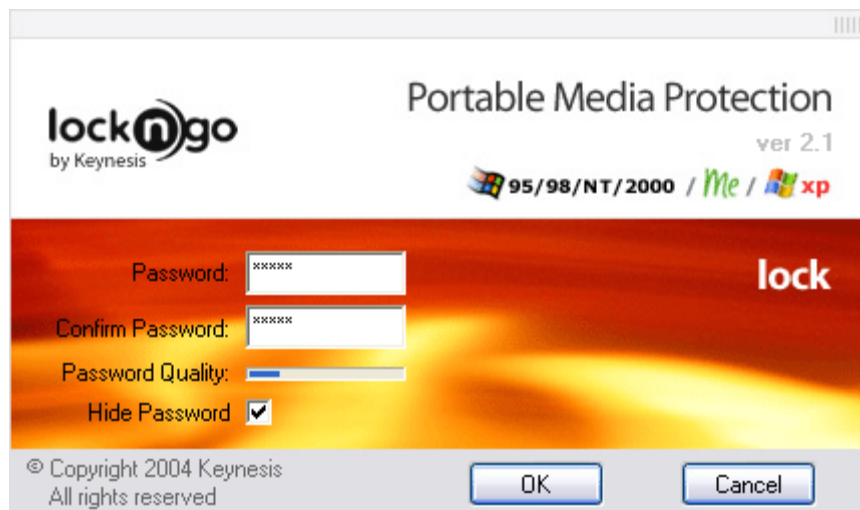


Figure 2: Lockngo demo version user interface

"Password Quality" - a graphical indicator of the quality of the password you type.

"Hide Password" - unmark this option to make your password visible while typing it (useful when you are not positive that you typed the password correct)



Figure 3: show password

3.2. Visual feedback during lock

During drive lock, the Lockngo user interface will close along with the explorer window of your drive. A "Locking..." message will appear.

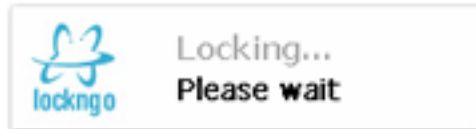


Figure 4: "Locking..." message

During locking, the explorer window of the drive should reappear, this time showing the drive as containing only the Lockngo.exe file (used for unlock).

3.3. Lock reminder

If Lockngo was used to unlock the drive to access its content, and later the drive is unplugged unlocked, an alert window will appear reminding to lock the drive. This alert window can be turned off manually by clicking the "OK" button in the alert window. This alert window will self-close in 25 seconds if the "OK" button was not pressed manually.

3.4. Unlocking your removable drive

Run Lockngo by double clicking on the Lockngo.exe inside the locked drive. Type the exact same password you used to lock the drive. Click the 'OK' button and wait for the unlock process to complete.

3.5. Visual feedback during unlock

During drive unlock, the Lockngo user interface will close along with the explorer window of your drive. An "Unlocking..." message will appear. Next, the explorer window of the drive should reappear, showing the entire content of the drive.

4. Important Issues

Data Backup

It is always a good practice to backup your data. Backing up your data will assure that if your removable drive is lost, stolen or if your data is deleted or corrupted for any reason (such as power shortage, accidental delete or format) you will still have a safe copy. Please make sure to backup your data on a regular basis.

Backup copy of Lockngo

Always keep a backup copy of Lockngo. This might become handy if you accidentally delete Lockngo from your removable drive or if the file Lockngo.exe file is corrupted. This might happen in rare cases of power shortage during drive locking or in cases of a removable drive that was plugged out during the read or write operation. If, for some reason, Lockngo.exe does not work from your drive, copy the backup copy of Lockngo onto your drive (overwriting the existing file) and run it.

Uninstalling other removable drive utilities before using Lockngo

If you are using, or have installed any other removable drive software, we recommend uninstalling it before using Lockngo.

5. Frequently Asked Questions (FAQ)

What type of encryption does Lockngo use?

Lockngo uses the AES encryption algorithm. The basic version of Lockngo uses AES 128bit to encrypt the removable drive file-system. Lockngo Professional uses AES 256bit encryption and offers also an option to encrypt the entire drive. See next question.

When is it recommended to encrypt the entire drive (in Lockngo Professional version only)?

We recommend encrypting the entire drive in the following cases:

1. You have highly sensitive data stored on the removable drive. Please remember that the drive file-system is encrypted even if the entire drive is not encrypted.
2. You are willing to wait the time this process requires (approximately 2.5 minutes for every 256MB of drive space on USB 2.0).
3. Your drive supports the HIGH-SPEED USB 2.0 standard and it is connected to a computer with USB 2.0 controller.
4. Your removable drive is not bigger than 500MB.

What happens if I deleted Lockngo.exe file from my removable drive by mistake?

Simply copy the file again to your removable drive. We highly recommend that you save a copy of the full version file on your hard drive for safekeeping. If you did not save a copy of your full version, you will need to re-download your full version from the Lockngo site www.keynesis.com.

I have forgotten my password. Can you tell me if there is a backdoor to my data?

For your own protection, there are absolutely no backdoors to Lockngo. We highly recommend that you backup your data before you lock it. Backing up your data is important for your protection not only in cases of forgotten password, but also in case the removable drive gets lost or stolen. If your data has been locked and you cannot remember the password you used, you can reformat your drive and copy your registered version of Lockngo to return your drive to normal operation state. Please note, that by formatting your drive you are permanently deleting its content.

I plugged in my removable drive and I see only Lockngo ("lockngo.exe") in it. How can I tell if this drive is locked or if it is simply empty?

Just run Lockngo. The Lockngo user interface will indicate if the drive is locked or unlocked.

How can I tell that it is safe to unplug my drive after locking? Can I plug my drive immediately after the Lockngo window closes or do I need to wait?

Even if Lockngo finished locking the drive and the Explorer window is opened, the operating system still may require some additional time to transfer information to and from the drive. You should wait until the led on your removable disk turns off and only then you can be sure that it is safe to unplug the drive. In Windows® 2000 and Windows® XP®, there is also a

media eject icon. We recommend that you always use the safe media eject process to safely dismount and unplug the portable media.

What will happen if I format a locked disk?

The files in the locked drive will be permanently deleted.

When I start Lockngo all the messages are in English. Is there a multi-lingual version of Lockngo?

Yes. Currently Lockngo supports numerous languages. Lockngo automatically change the user interface language based on your 'Regional Settings' inside your computer Control Panel.

Must I lock the removable drive using Lockngo before I unplug it to secure it?

Yes. Lockngo needs to be run before the drive is unlocked to lock it. If you used Lockngo (for example to unlock your drive when you plugged your removable drive) and later you unplugged your removable drive without locking it, Lockngo will show an alert window to remind you to lock the drive. This alert window will automatically disappear in 25 seconds.